

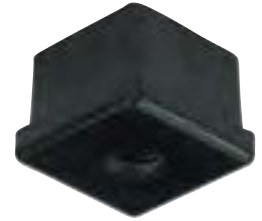
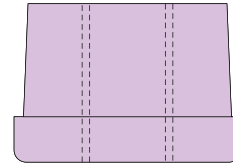
AFS

TUBE-END FITTINGS | SQUARE THREADED SOCKET ADAPTORS | SUITABLE FOR USE WITH AF SERIES ADJUSTABLE LEVELLING FEET



MISCELLANEOUS PRODUCTS

| to suit tube | thread size | load capacity | reference |
|-----------------------|-------------|---------------|----------------|
| 1" x 1" x 18g | M8 | 150 | AFS 1X18 M8 |
| 1" x 1" x 16g | M8 | 200 | AFS 1X16 M8 |
| 1 1/8" x 1 1/8" x 18g | M8 | 150 | AFS 118X18 M8 |
| 25 x 25 x 1.5 | M10 | 200 | AFS 25X15 M10 |
| 30 x 30 x 1.5 | M10 | 200 | AFS 30X15 M10 |
| 30 x 30 x 2.0 | M10 | 200 | AFS 30X20 M10 |
| 1 1/4" x 1 1/4" x 18g | M10 | 250 | AFS 114X18 M10 |
| 1 1/4" x 1 1/4" x 16g | M10 | 250 | AFS 114X16 M10 |



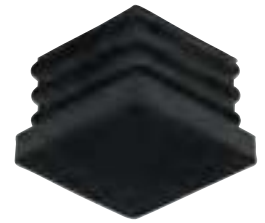
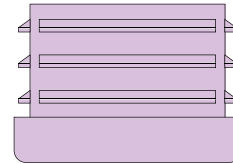
EF

TUBE-END FITTINGS | SQUARE END CAPS



MISCELLANEOUS PRODUCTS

| to suit tube | reference |
|--------------------------|-----------|
| 3/4" x 3/4" x 18/16g | EF 34 |
| 7/8" x 7/8" x 18/16g | EF 78 |
| 1" x 1" x 18/16g | EF 1 |
| 30 x 30 x 1.5/2.0 | EF 30 |
| 1 1/4" x 1 1/4" x 18/16g | EF 114 |



BUF

ROTATING BUFFERS | PREVENT DAMAGE TO EQUIPMENT AND FABRIC OF BUILDING | SOFT, FOAMED PLASTIC TYRE | NON-MARKING



MISCELLANEOUS PRODUCTS



| buffer diameter | tube outside diameter / size | for round tube | for square tube |
|-----------------|------------------------------|----------------|-----------------|
| 115 | 20 | BUF 115 R20 | |
| | 25 | BUF 115 R25 | BUF 115 S25 |
| | 28.5 | BUF 115 R28 | |
| | 30 | | BUF 115 S30 |
| | 32 | BUF 115 R32 | BUF 115 S32 |

i All dimensions are in mm and all loadings are in kg unless otherwise stated

