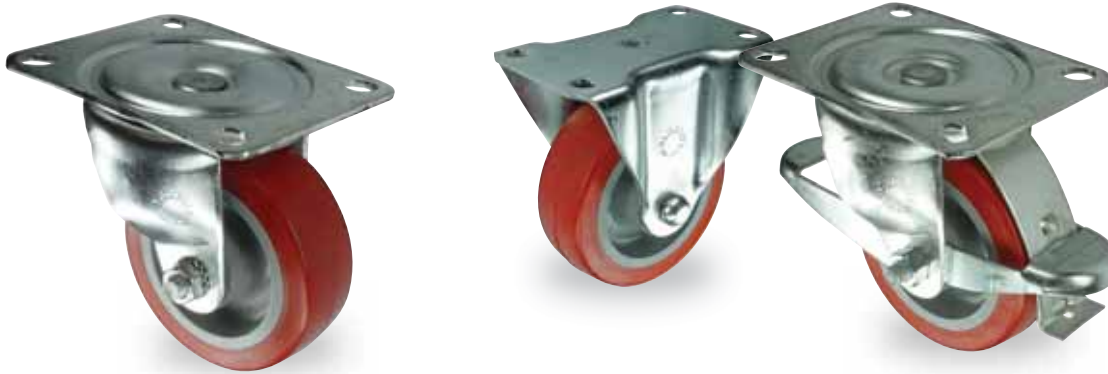


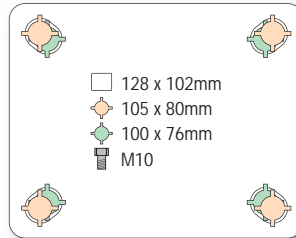
- Single ball race
- Top plate fixing



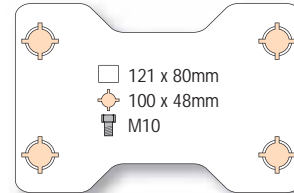
61 + POLYURETHANE TYRED WHEEL WITH NYLON CENTRE



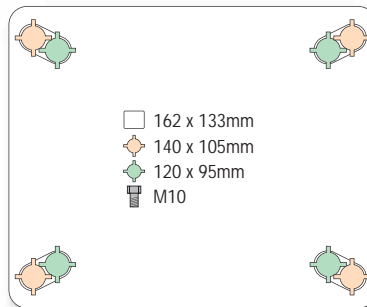
100mm swivel



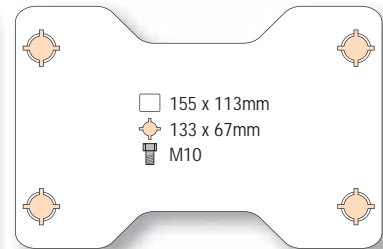
100, 125mm fixed



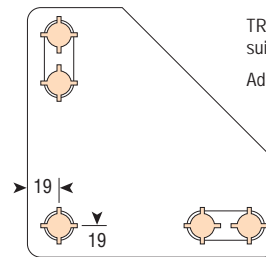
125, 150mm swivel



150mm fixed



wheel diameter	tread width	fitted height	swivel offset	load capacity	bearing type			
						swivel	fixed	swivel + wheel brake
100	35	125	26	250	roller	4 61 PNB	4 88 PNB	4 61 PNB BR
125	35	156	35.5	300	roller	5 61 PNB	5 88 PNB	
150	45	181	42	600	roller	6 61 PNB	61 88 PNB	



TRIANGULAR TOP PLATE to suit 100mm swivel castors
Add V to castor reference

- 150 x 150mm
- ◇ 96-114 x 96-114mm
- ⊕ M10

NOTE: All dimensions are in mm and all loadings in kg unless otherwise stated