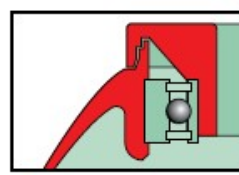




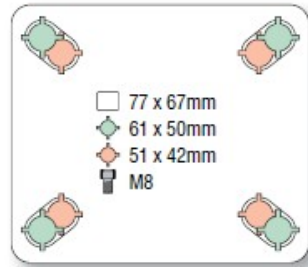
manner



- Contemporary design
- Corrosion resistant polyamide construction
- Plate fixing
- Precision ball bearing in swivel head
- Labyrinth seal for protection in wet conditions

TANGO  
MKL  
GKL/GPL

**i** Only ball bearing wheels are fitted with threadguards



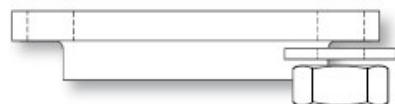
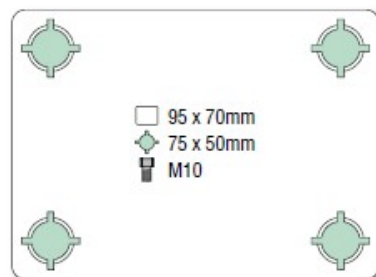
**f** Total stop castors: red pedal  
Directional lock castors: dark grey pedal

### TANGO + THERMOELASTIC RUBBER TYRED WHEEL WITH POLYPROPYLENE CENTRE - PLATE FIXING

wheel diameter	tread width	fitted height	swivel offset	shore A	load capacity	bearing type	swivel	fixed	swivel + total stop brake	swivel + directional lock
75	32	117	35.5	80	70	plain	MKL-75 PTE 80		MKL-J-75 PTE 80	MKL-R-75 PTE 80
	32	117	35.5	80	70	ball	MKL-S-75 PTE/K 80		MKL-J-S-75 PTE/K 80	MKL-R-S-75 PTE/K 80
100	32	148	45	55	70	plain	GKL-100 PTE 55	GPL-100 PTE 55	GKL-J-100 PTE 55	GKL-R-100 PTE 55
	32	148	45	55	70	ball	GKL-S-100 PTE/K 55	GPL-S-100 PTE/K 55	GKL-J-S-100 PTE/K 55	GKL-R-S-100 PTE/K 55
	32	148	45	80	100	ball	GKL-S-100 PTE/K 80	GPL-S-100 PTE/K 80	GKL-J-S-100 PTE/K 80	GKL-R-S-100 PTE/K 80
	32	148	45	90	110	ball	GKL-S-100 PTE/K 90	GPL-S-100 PTE/K 90	GKL-J-S-100 PTE/K 90	GKL-R-S-100 PTE/K 90
125	32	168	44.5	55	70	plain	GKL-125 PTE 55	GPL-125 PTE 55	GKL-J-125 PTE 55	GKL-R-125 PTE 55
	32	168	44.5	55	70	ball	GKL-S-125 PTE/K 55	GPL-S-125 PTE/K 55	GKL-J-S-125 PTE/K 55	GKL-R-S-125 PTE/K 55
	32	168	44.5	80	100	ball	GKL-S-125 PTE/K 80	GPL-S-125 PTE/K 80	GKL-J-S-125 PTE/K 80	GKL-R-S-125 PTE/K 80
	32	168	44.5	90	110	ball	GKL-S-125 PTE/K 90	GPL-S-125 PTE/K 90	GKL-J-S-125 PTE/K 90	GKL-R-S-125 PTE/K 90

### TANGO + ELASTIC RUBBER TYRED WHEEL WITH NYLON CENTRE - PLATE FIXING

wheel diameter	tread width	fitted height	swivel offset	shore A	load capacity	bearing type	swivel	fixed	swivel + total stop brake	swivel + total stop brake
100	32	148	45	60	80	ball	GKL-S-100 NEK/K	GPL-S-100 NEK/K	GKL-J-S-100 NEK/K	GKL-R-S-100 NEK/K
125	32	168	44.5	60	100	ball	GKL-S-125 NEK/K	GPL-S-125 NEK/K	GKL-J-S-125 NEK/K	GKL-R-S-125 NEK/K



#### ◀ ALTERNATIVE TOP PLATE.

Available on all castors.  
Add **95X70** to castor reference.

#### ▶ SEALED, STAINLESS STEEL BEARING in swivel head. Includes stainless steel wheel bearing (for ball bearing wheels) and all other metal components in stainless steel.

Available on all 100, 125mm castors with 80 shore A.  
Add **-IX** to castor reference.



**i** All dimensions are in mm and all loadings in kg unless otherwise stated