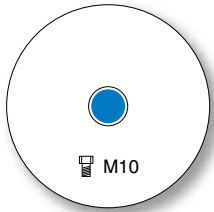
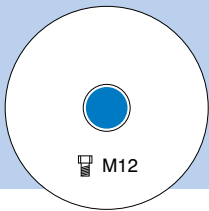


## GK | PTE AX | SINGLE HOLE FIXING

ANTI-STATIC GREY THERMOELASTIC RUBBER TYRED WHEEL WITH POLYPROPYLENE CENTRE



wheel diameter	tread width	fitted height	swivel offset	shore A	load capacity	bearing type	swivel	fixed	swivel + total-stop brake	swivel + directional lock
75	32	110	35.5	86	70	ball	GK-S-75 PTE/K A		GK-JY-S-75 PTE/K A	
100	32	141	45	86	100	ball	GK-S-100 PTE/K AX		GK-JY-S-100 PTE/K AX	
125	32	161	44.5	86	100	ball	GK-S-125 PTE/K AX		GK-JY-S-125 PTE/K AX	



### ALTERNATIVE HOLE SIZE

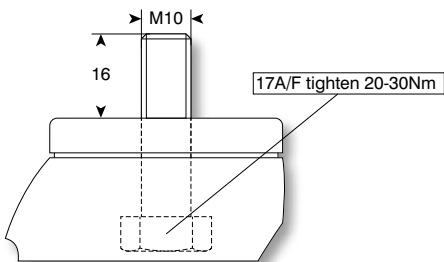
Available on all castors

Access is restricted. It is therefore recommended to fit bolt from above with nut and washer underneath the swivel head

Add -12 to castor reference

## GKR | PTE AX | BOLT FIXING

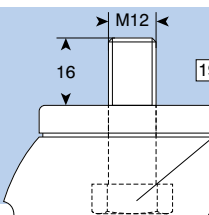
ANTI-STATIC GREY THERMOELASTIC RUBBER TYRED WHEEL WITH POLYPROPYLENE CENTRE



**i** Total stop castors: yellow pedal  
Directional lock castors: dark grey pedal



wheel diameter	tread width	fitted height	swivel offset	shore A	load capacity	bearing type	swivel	fixed	swivel + total-stop brake	swivel + directional lock
75	32	110	35.5	86	70	ball	GKR-S-75 PTE/K A		GKR-JY-S-75 PTE/K A	GKR-R-S-75 PTE/K A
100	32	141	45	86	100	ball	GKR-S-100 PTE/K AX		GKR-JY-S-100 PTE/K AX	GKR-R-S-100 PTE/K AX
125	32	161	44.5	86	100	ball	GKR-S-125 PTE/K AX		GKR-JY-S-125 PTE/K AX	GKR-R-S-125 PTE/K AX



### ALTERNATIVE BOLT SIZE

Available on all castors

Add M12 to castor reference

**i** All dimensions are in mm and all loadings are in kg unless otherwise stated