

V2K ISO | PT

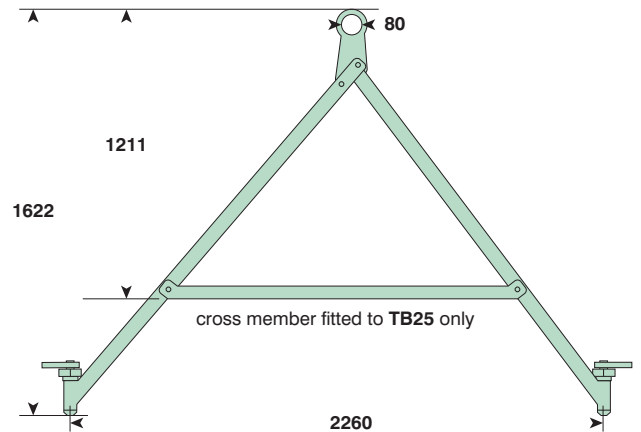
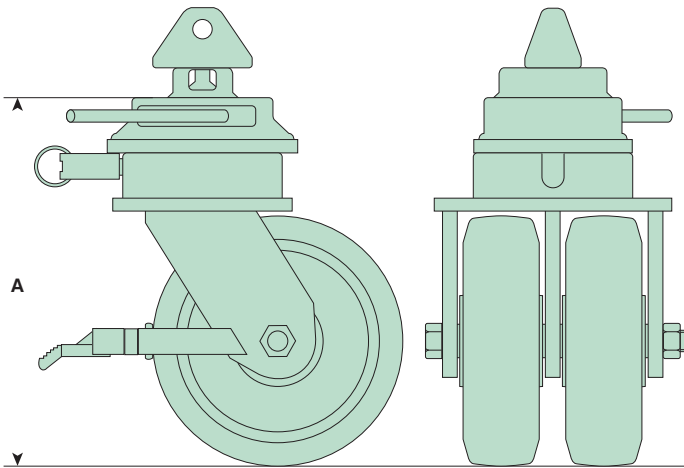
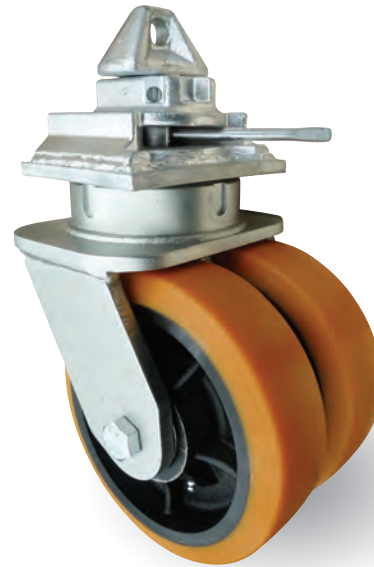
POLYURETHANE TYRED WHEEL WITH CAST IRON CENTRE

V2K ISO series Towcastors enable freight containers to be moved quickly and easily without the use of expensive equipment such as cranes, gantries or side loading fork trucks etc.

The system consists heavy duty fabricated steel castors fitted with either one or two polyurethane tyred cast iron wheels. The castors are supplied complete with special adaptor plates which lock positively by means of a quick action lever into the corner block incorporated into all ISO freight containers.

Supplied in sets of four castors consisting of:

- 2 x swivel castors with 4 station directional lock
- 2 x swivel castors with 4 station directional lock and wheel brake



wheel diameter	tread width	A	swivel offset	load capacity per set of 4		bearing type	set of 4	set of 4
				static	dynamic		single wheel castors	twin wheel castors
151	75	240	76	6750	5400	ball	V2K ISOS 150X75	
250	2 x 63	369.5	76	12000	9000	ball		2V2K ISOS 250X63
252	2 x 76	373	76	18000	13500	ball		2V2K ISOS 250X76



TOWING BAR

10,000kg capacity: order ref **V2K TB10**
 25,000kg capacity: order ref **V2K TB25** (shown left)

i All dimensions are in **mm** and all loadings are in **kg** unless otherwise stated