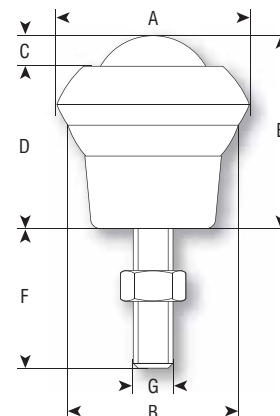


BALL TRANSFER UNITS

V TYPE B

- Ball transfer units with threaded stem and cup fixing
- Available with mild steel, nylon or stainless steel ball

VARLEY



ball diameter	units with mild steel ball							units with nylon ball			completely stainless units					
	A	B	C	D	E	F	G	load ball up	load ball down	reference	load ball up	load ball down	reference	load ball up	load ball down	reference
19	32.1	25.4	4.7	25.5	30.2	35	M8	25	10	V19B	20	n/a	V19B NY	25	10	V19B SS
25	39.7	25.4	6.3	33.4	39.7	33	M8	55	25	V25B	25	n/a	V25B NY	55	25	V25B SS
31	73.0	49.7	8.0	34.0	42.0	35	M10	125	55	V31B						
40	55.5	49.0	11.9	45.1	57.0	38	M10	140	60	V40B				140	60	V40B SS

NOTE: All dimensions are in mm and all loadings in kg unless otherwise stated