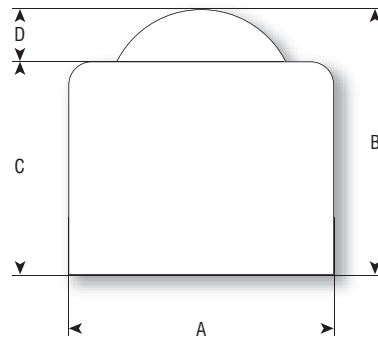




ball diameter	units with mild steel ball				load		reference
	A	B	C	D	ball up	ball down	
12	20	20	18	2	25	n/a	V12H
19	30	30	26	4	50	n/a	V19H
25	35	35	28	7	125	n/a	V25H



NOTE: All dimensions are in mm and all loadings in kg unless otherwise stated