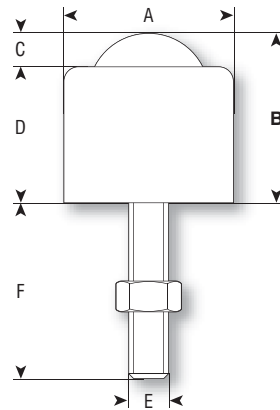




ball diameter	A	B	C	D	E	F	units with mild steel ball		reference
							load ball up	load ball down	
12	20	20	2	18	M6	28	25	n/a	V12J
19	30	30	4	26	M8	25	50	n/a	V19J
25	35	35	7	28	M8	40	125	n/a	V25J



NOTE: All dimensions are in mm and all loadings in kg unless otherwise stated