

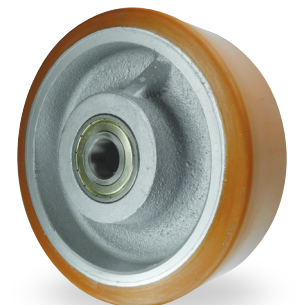
	wheel diameter	tread width	hub width	bore diameter	load capacity	used in castor series	ball bearing
<b>P</b>	100	50	60	20	350	V50Q VSL VSH 2VSH	G 100 APJ 20
<b>P</b>	125	50	60	20	450	V50Q VSL VSH 2VSH	G 125 APJ 20
<b>P</b>	150	50	60	20	550	VSL VSH 2VSH	G 150 APJ 20
<b>P</b>	160	50	60	20	550	V50Q	G 160 APJ 20
<b>P</b>	200	50	60	20	800	V50Q VSL VSH 2VSH	G 200 APJ 20



	wheel diameter	tread width	hub width	bore diameter	load capacity	used in castor series	ball bearing
<b>P</b>	100	40	60	17	300	V50Q VSL VSH	G 100 EAPJ 17
<b>P</b>	125	40	60	17	350	V50Q VSL VSH	G 125 EAPJ 17
<b>P</b>	150	40	60	17	450	V50Q VSL VSH	G 150 EAPJ 17
<b>P</b>	200	40	60	17	520	V50Q VSL VSH	G 200 EAPJ 17



	wheel diameter	tread width	hub width	bore diameter	load capacity	used in castor series	ball bearing
<b>P</b>	100	49	60	20	350	V50Q VSL VSH 2VSH	G 100 PTJ 20
<b>P</b>	125	50	60	20	450	V50Q VSL VSH 2VSH	G 125 PTJ 20
<b>P</b>	150	50	60	20	800	VSL VSH 2VSH	G 150 PTJ 20
<b>P</b>	160	50	60	20	800	V50Q	G 160 PTJ 20
<b>P</b>	200	50	60	20	1000	V50Q VSL VSH 2VSH	G 200 PTJ 20
<b>P</b>	250	50	60	25	1300	V50Q VSH 2VSH	G 250 PTJ 25



**P** Preferred range product, see page 1 for details

**i** All dimensions are in mm and all loadings are in kg unless otherwise stated